

# PRIME RESEARCH

Empowering decisions

## Prime Daily

January 22, 2025





## Absence of any explicit orders on tariffs buoyed US markets

American stocks reacted positively to what appears to be a more measured rollout of trade policy from the Trump administration. Soon after taking over as the 47th US President today, Donald Trump signed a record number of executive orders, covering a wide range of topics, from requiring federal workers to return to the office full-time to revoking birthright citizenship and pulling the United States out of the Paris Climate agreement. There was an absence of any explicit orders on tariffs.

The Dow Jones rose 537 points to 44025, the S&P 500 gained 52 points to 6049 and the Nasdaq gained 126 points to 19756 to close near its highest level since Jan. 6, logging its fifth daily gain out of the last six trading sessions. Small-cap stocks also outperformed today, with the Russell 2000 gaining over 1.5%, reflecting a risk-on tone in equity markets.

The U.S. Dollar Index was lower by more than 1%. Trump's decision not to impose immediate tariffs sent the benchmark 10-year yield to its lowest level in three weeks.

The Indian benchmark indexes fell further on Tuesday, closing at their lowest level since June, as investors were concerned about US President Donald Trump's proposed trade tariffs. The rise in volatility coincides with the weekly expiry of the Sensex futures contracts.

Nifty failed to surpass its early morning high of 23426, remaining under bearish pressure throughout the session. The index has now declined over 13% from its all-time high of 26,277, closing at its lowest point in the current downtrend. On the daily chart, the Nifty formed a bearish engulfing candlestick pattern, encompassing the movement of the previous six trading sessions, with the next support level at 22800 and resistance at 23200.

Indian markets are poised to open modestly higher today on positive global cues.



## Global Equity Indices

	Close	Abs. Change	% Change
Indian Indices			
Sensex	75,838	-1235.1 ▼	-1.60%
Nifty	23,025	-320.1 ▼	-1.37%
Midcap	53,835	-1271.3 ▼	-2.31%
Small cap	17,457	-408.2 ▼	-2.28%
US Indices			
Dow Jones	44,026	577.8 ▲	1.33%
S&P 500	6,049	52.2 ▲	0.87%
Nasdaq	19,757	126.8 ▲	0.65%
European Indices			
FTSE	8,548	27.8 ▲	0.33%
DAX	21,042	51.7 ▲	0.25%
CAC	7,771	37.4 ▲	0.48%
Asian Indices			
Shanghai	3,211	-33.4 ▼	-1.03%
Hang Seng	19,808	-117.9 ▼	-0.59%
Nikkei	39,599	696.6 ▲	1.79%

## Indices Futures

	Close	Abs. Change	% Change
Indian Indices			
IFSC Nifty	23,171	69.5 ▲	0.30%
US Indices			
Dow Jones	44,272	1119.0 ▲	2.59%
S&P 500	6,101	104.3 ▲	1.74%
Nasdaq	21,839	747.8 ▲	3.55%
European Indices			
FTSE	8,563	13.5 ▲	0.16%
DAX	21,276	112.0 ▲	0.53%
Asian Indices			
Shanghai	3,780	-49.0 ▼	-1.28%
Hang Seng	19,829	-331.0 ▼	-1.64%
Nikkei	39,600	640.0 ▲	1.64%

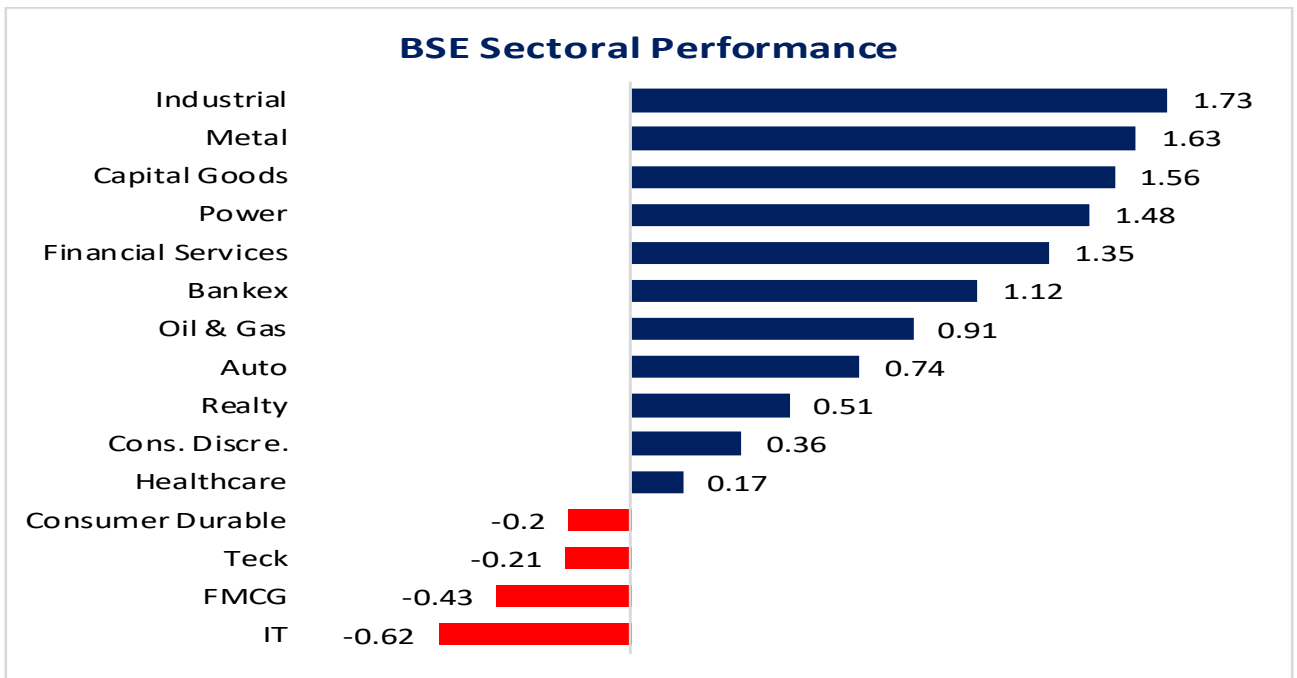


**Nifty50 Index Contributors**

Top Five (Positive Contributors)		
Stock	Points	%
APOLLOHOSP	3.1	0.01%
TATACONSUM	1.7	0.01%
JSWSTEEL	1.6	0.01%
HCLTECH	1.5	0.01%
BPCL	1.3	0.01%

Bottom Five (Negative Contributors)		
Stock	Points	%
ICICIBANK	-57.8	-0.25%
RELIANCE	-48.0	-0.21%
TRENT	-17.5	-0.07%
SBIN	-17.3	-0.07%
HDFCBANK	-15.0	-0.06%

**BSE Sectoral Leaders & Laggards**



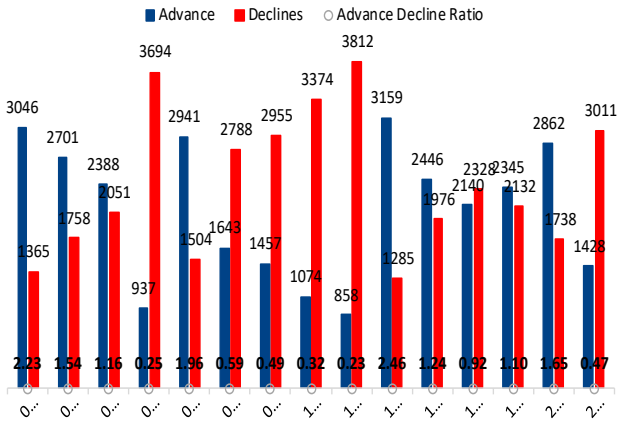
**Nifty50 Index Top Pops and Drops**

Nifty50 Top Five Gainers			
Symbol	LTP	% Change	Volume
APOLLOHOSP	6,925.0	2.13%	799,900
TATACONSUM	972.0	1.22%	2,281,022
BPCL	280.4	1.10%	15,304,149
SHRIRAMFIN	520.1	0.65%	7,753,705
JSWSTEEL	924.1	0.53%	1,474,919

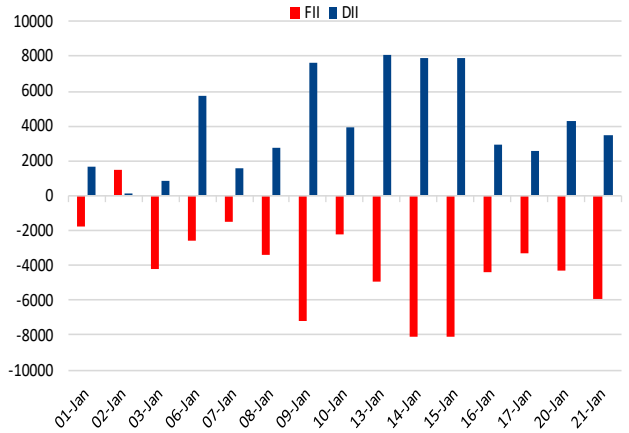
Nifty50 Top Five Losers			
Symbol	LTP	% Change	Volume
TRENT	5,724.8	-6.00%	1,553,225
NTPC	324.5	-3.44%	12,774,630
ADANIPORTS	1,110.9	-3.29%	3,134,022
ICICIBANK	1,198.0	-2.84%	20,520,898
ADANIENT	2,375.0	-2.78%	1,206,512



## BSE Advance & Declines



## Institutional Activities



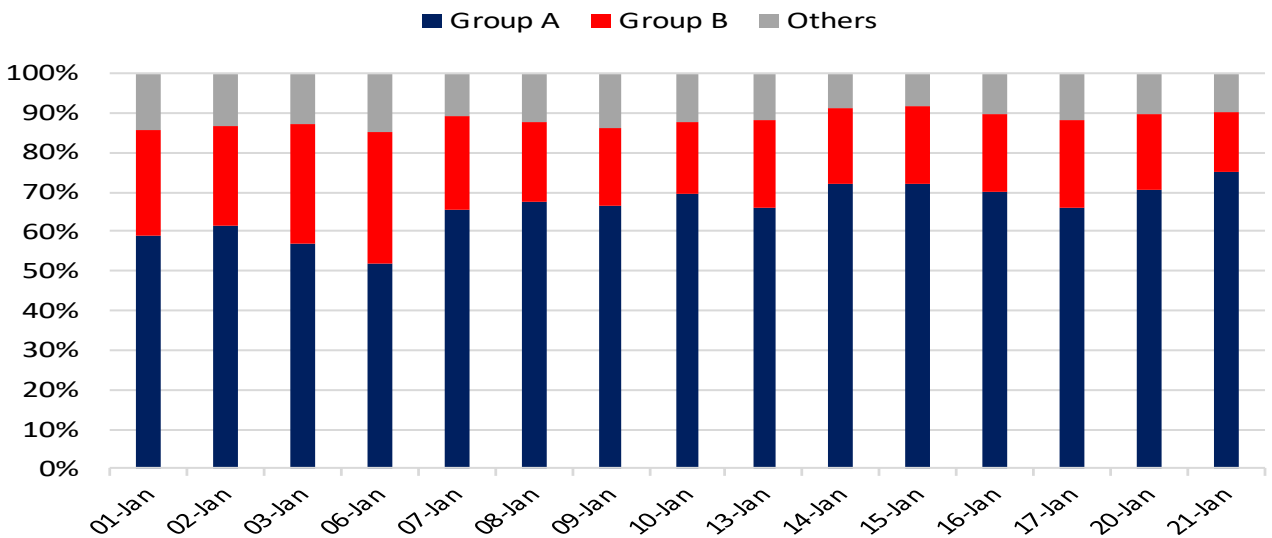
## 52 Week High Stocks

	21-Jan-25	20-Jan-25
BSE Universe	144	157
<b>BSE Group A Stocks Hitting 52 Week High</b>		
Stocks	Price	52 Week High
BIOCON	390.30	404.60

## 52 Week Low Stocks




	21-Jan-25	20-Jan-25
BSE Universe	78	91
<b>BSE Group A Stocks Hitting 52 Week Low</b>		
Stocks	Price	52 Week Low
VENUSPIPES	1362.25	1352.1
ASTRAL	1464.6	1455
EASEMYTRIP	13.76	13.67
PRINCEPIPE	393.5	392
SONACOMS	556.25	554.3

## BSE Cash Market Turnover Participant-wise





## News Highly Sensitive to Stock Price

Impact	Stock	News
	<b>PNB Housing Finance Ltd.</b>	PNBHF reported 36% YoY surge in net profit at Rs 471.4 crore. NII increased 15% and stood at Rs 1,119 crore. Pre-provision operating profit grew 16.1% YoY and 3.7% sequentially to Rs 579.5 crore. Net interest margin (NIM) rose to 3.7% in Q3FY25, from 3.68% in Q2FY25. GNPA declined by 54bps to 1.19% as of December, 2024, as compared to 1.73%, a year earlier. The company recovered Rs 53 crore from the retail written-off pool during Q3 FY25.
	<b>Dalmia Bharat Ltd.</b>	Revenue down 11.7% at Rs 3,181 crore. EBITDA declined 34.4% at Rs 511 crore. EBITDA margin stood at 16.1% vs. 21.6%. Net profit was down 75.2% YoY at Rs 66 crore. Other Income declined 38% YoY at Rs 37 crore.
	<b>KEI Industries</b>	Revenue up 19.8% YoY at Rs 2,467 crore. EBITDA margin stood at 9.6% vs. 10.4%. Net profit increased 9.4% at Rs 165 crore.



Stock	News
<b>Oil and Gas</b>	(1) The oil ministry has sought a cooking gas subsidy of Rs 40,000 crore for state-run oil marketing companies selling the fuel at below-market rates. (2) India may purchase more American energy as US President Donald Trump's pro-oil and gas policies will increase US supplies to the global market, weighing on prices.
<b>IOCL</b>	Indian Oil has crafted an aggressive plan to raise city gas sales volumes to 10 million metric standard cubic meters a day (mmscmd) by 2030 from a mere 0.4 mmscmd currently, relying on a strategy to win over industries and commercial vehicle owners to rapidly embrace the cleaner fuel.
<b>Jana Small Finance Bank</b>	<p>Jana Small Finance Bank plans to apply for a universal banking license next fiscal year. The bank has maintained a net non-performing assets ratio below 1%, has increased its secured loan book, and met other regulatory requirements.</p> <p>The Bank reported 17.9% drop in standalone net profit at Rs 110.6 crore in Q3FY25, as compared to a net profit of Rs 134.6 crore in the same period last year.</p> <p>Net interest income (NII) stood at Rs 593 crore, an 8% increase from Rs 549 crore in Q3FY24.</p>
<b>Tata Elxsi</b>	Tata Elxsi has joined hands with blockchain-powered traceability solutions provider Minespider to introduce an advanced battery lifecycle management platform.
<b>Jio Financial Services</b>	Jio Financial Services Ltd (JFSL) and its joint venture partner US-based BlackRock have infused Rs 117 crore in the mutual fund company.
<b>Cyient DLM</b>	Revenue up 38% at Rs 444 crore. Operating margin was down 270 bps at 6.3% vs. 9%. Adj. operating margin stood at 8.1% for the quarter. Net profit was down 40.2% at Rs 10.8 crore. The company has pending order book of Rs 2143 crore as on Dec-2024.
<b>IndiaMart InterMesh</b>	Revenue up 16% at Rs 354 crore. Operating margin at 39% vs. 28.1%. Net profit was up 47% at Rs 121 crore. Other expenses declined 22.3% YoY at Rs 63 crore.





Stock	News
<p><b>Tech Mahindra Ltd Q3FY25 result key takeaways</b></p> <p><b>Tech Mahindra numbers were almost in-line with estimates in Q3FY25 led by robust performance across segments and geographies.</b></p>	<p><b>Reported numbers:</b> Consolidated revenue was down by 0.2% QoQ and up by 1.4% YoY to Rs 13,286 crore. Revenue USD 1,567 mn; down 1.3% QoQ, down 0.4% YoY. Revenue grew by 1.2% QoQ and by 1.3% YoY in constant currency terms.</p> <p>EBIT increased by 5.5% QoQ and 92.1% YoY to Rs 1350.2 crore in Q3FY25, supported by lower subcontracting costs and other expenses. EBIT margin ramped up to 10.2% in Q3FY25 vs. 9.6% in Q2FY25 and 5.4% in Q3FY24. Net Profit fell 21.4.4% QoQ, and rose 88.8% YoY to Rs 989 crore.</p> <p><b>TCV and Client metrics:</b> Tech Mahindra won net new deals worth US\$ 745 Mn in Q3FY25, vs. US\$ 603 Mn in Q2FY25, US\$ 534 Mn in Q1FY25, US\$ 500 Mn in Q4FY24, and US\$ 381 Mn in Q3FY24. Total clients stood at 1175 as on Dec 31, 2024, vs. 1178 as on Sept 30, 2024, 1165 as on June 30, 2024, 1172 as on March 31, 2024, and 1228 as on Dec 31, 2023.</p> <p><b>Earnings and valuation:</b> Earnings per share was at Rs 11.1 in Q3FY25, Rs 14.1 in Q2FY25, Rs 8.7 in Q1FY25. At a CMP of Rs 1659, the stock is trading at 20.3x FY27E EPS.</p>
<p><b>Neuland Laboratories</b></p>	<p>Considering the business opportunities and to capitalize on current capabilities, the company is planning to build a new Peptide block with significant peptide manufacturing capacity at its Unit-1, allowing the business to scale. Board’s approval of this investment of Rs 254cr will enhance Peptide Synthesizer reactor capacity from 0.5 KL to 6.37 KL. The Company plans to fund this CAPEX through debt and internal accruals. The Company expects the project to be completed by FY27. This peptide manufacturing block will be a multi-product facility servicing the needs of both CMS and GDS customers.</p> <p>The Board has also approved an investment of Rs 88cr towards building an additional capacity of 52 KL in its Unit-3. This capacity is expected to come online in 15 to 18 months.</p>
<p><b>Persistent System Q3FY25 result preview</b></p>	<p>Persistent could report 5.1% QoQ and 21.9% YoY revenue growth to Rs 3,044 crore in rupee terms. In US\$ terms, revenue could rise by 4.3% QoQ and 19.9% YoY to US\$ 360 mn in Q3FY25. Net profit could rise by 9.1% QoQ and 23.9% YoY to Rs 355 crore in Q3FY25. EBIT margin could increase by 60bps QoQ and 30bps YoY to 14%.</p>



Stock	News
<b>Zensar Tech Q3FY25 result preview</b>	Zensar Tech could report 0.9% QoQ and 9.6% YoY revenue growth to Rs 1,320 crore in Rupee terms. The company could report a net profit at Rs 162 crore in Q3FY25. EBIT margin could decrease by 10bps QoQ and 150bps YoY to 13.1%. The management commentary on organic revenue growth, deal pipeline, an update on order execution, and an outlook on digital acceleration across the geographies would be key monitorable.





## News Highly Sensitive to Stock Price

### **Trump considering 10% tariff on China from Feb 1**

U.S. President Donald Trump said on Tuesday he is considering imposing 10% tariffs on Chinese imports from February 1, as he raised the possibility of increased duties on several major economies.

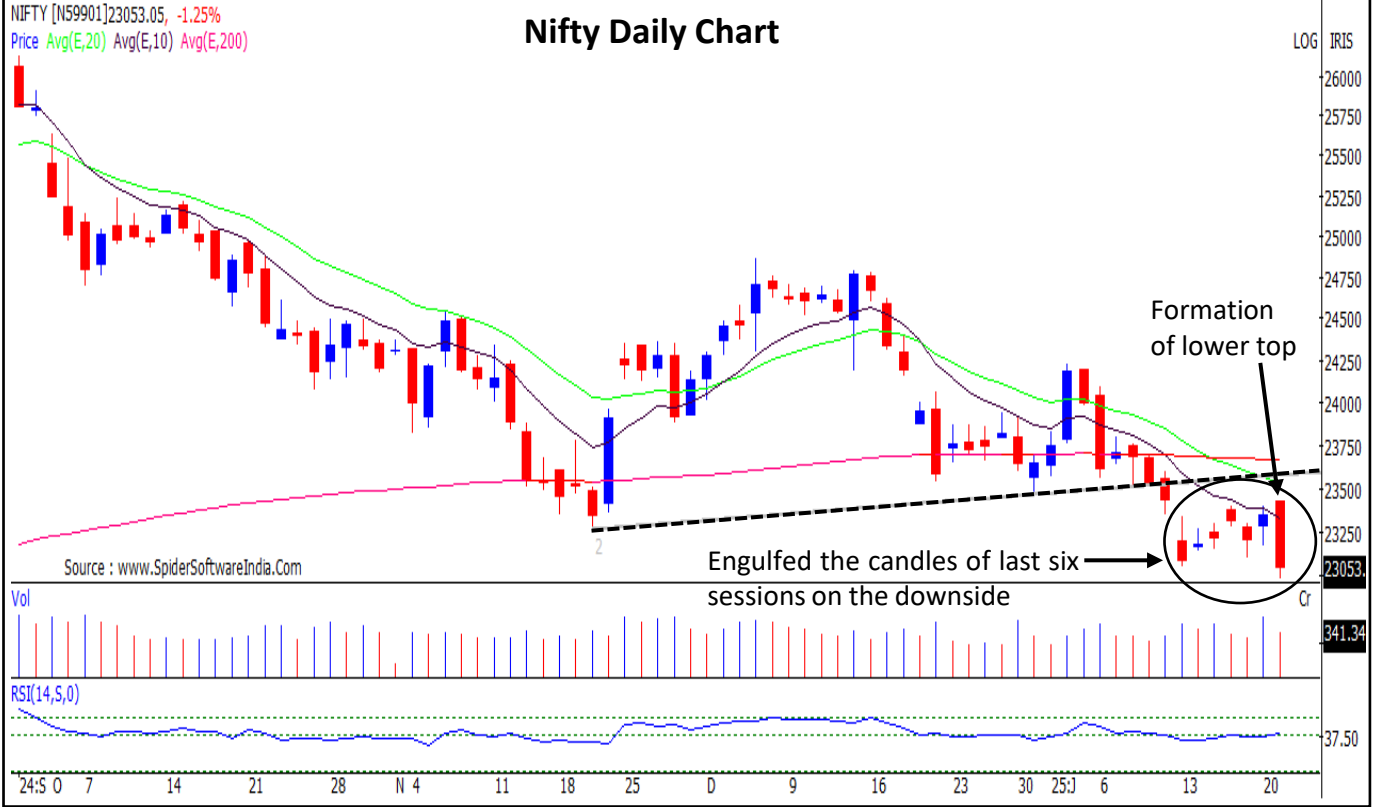
He raised the possibility of tariffs against Mexico and Canada on similar grounds, of around 25%. Trump also raised the possibility of tariffs against the European Union, on the grounds that they had trade imbalances with the U.S.

### **German exporters expect 2.7% drop in sales in 'bleak' 2025**

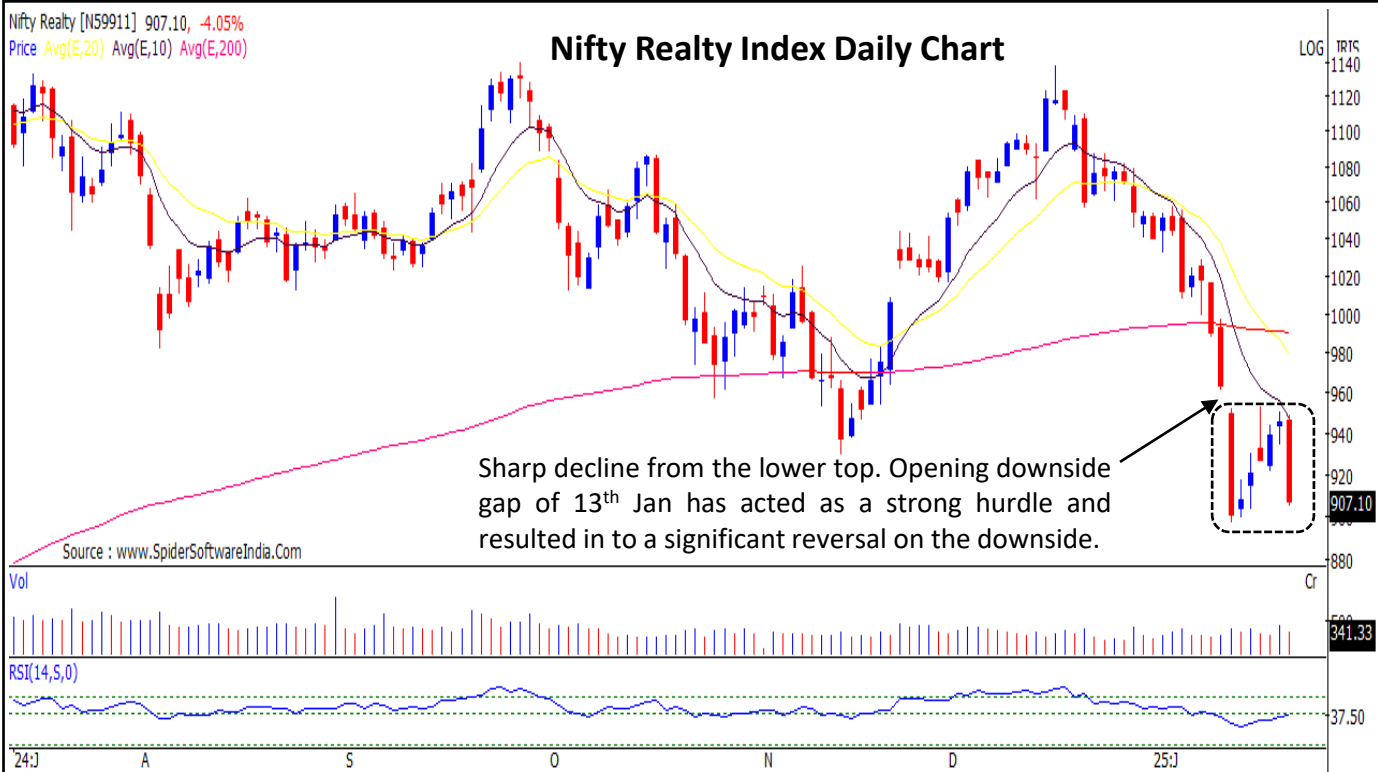
About 80% of German businesses who trade overseas expect a further decline in sales this year, Germany's BGA trade association said on Tuesday, forecasting a 2.7% decline in turnover compared with 2024. Another risk for the German economy is the tariffs promised by U.S. President Donald Trump, measures he says would boost U.S. manufacturing.



**Nifty : Sharp downside breakout post range movement. More weakness is likely.**



**Nifty Realty : Sharp downside momentum on the cards. Bearish lower tops and bottoms is intact.**





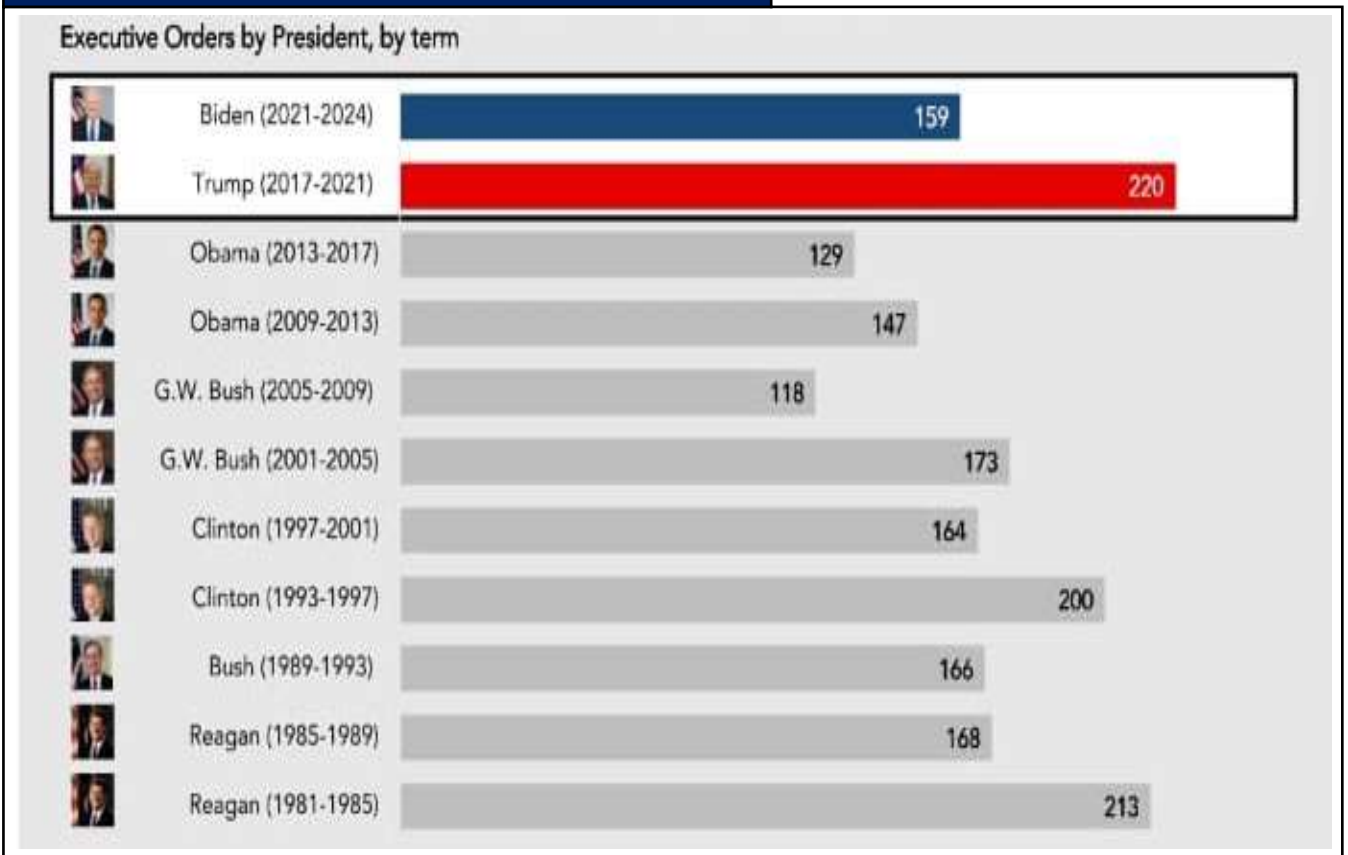
## CHART WITH INTERESTING OBSERVATION:

### More than 100 Executive Orders in First Few Days by US President

#### Observation:

- The American Bar Association defines an executive order as a “signed, written and published directive from the President of the United States that manages operations of the federal government.”
- Executive Orders and regulatory influence have long been important tools of US Presidential authority. Donald Trump issued a record number of executive orders in first few days of from inauguration.
- On First day of 20 January 2025, Trump has signed more than 80 Executive orders.

#### US President Executive Orders in First Few Days



Source: US Govt Affair Office, HSL Prime Research



## F&O HIGHLIGHTS

### GIFT NIFTY SUGGESTS POSITIVE OPENING

#### Create Longs with the SL Of 23000 Levels.

- Markets experienced significant volatility on Sensex's weekly expiry session, with Nifty closing down 320 points (1.37%) at 23,024.
- Short Build-Up was seen in the Nifty Futures where Open Interest rose by 6.40% with Nifty falling by 1.37%.
- Short Build-Up was seen in the Bank Nifty Futures where Open Interest rose by 7.46% with Bank Nifty falling by 1.58%.
- Nifty Open Interest Put Call ratio fell to 0.77 levels from 1.03 levels.
- Amongst the Nifty options (23-Jan Expiry), Call writing is seen at 23200-23300 levels, indicating Nifty is likely to find strong resistance in the vicinity of 23200-23300 levels. On the lower side, an immediate support is placed in the vicinity of 23000-23100 levels where we have seen Put writing.
- Short build-up was seen by FII's in the Index Futures segment where they net sold worth 2,428 cr with their Open Interest going up by 26468 contracts.

Index	Expected Trend	Prev. Close	Buy/Sell	Stop Loss	Target
NIFTY FUT	UP	23103.20	BUY	23000	23250
BANK NIFTY FUT	UP	48763.25	BUY	48500	49100

Nifty50 Snapshot			
	21-Jan-25	20-Jan-25	% Chg.
Nifty Spot	23024.65	23344.75	-1.37
Nifty Futures	23103.20	23400.20	-1.27
Premium/ (Discount)	78.55	55.45	N.A.
Open Interest (OI)	1.94	1.83	6.40
Nifty PCR	0.77	1.03	-24.96

Bank Nifty Snapshot			
	21-Jan-25	20-Jan-25	% Chg.
Bank Nifty Spot	48570.90	49350.80	-1.58
Bank Nifty Futures	48763.25	49512.90	-1.51
Premium/ (Discount)	192.35	162.10	N.A.
Open Interest (OI)	0.36	0.34	7.46
Bank Nifty PCR	0.56	0.65	-14.77

Nifty Options Highest OI (Weekly)			
CALL		PUT	
Strike Price	Open Interest	Strike Price	Open Interest
24000	12006900	22000	9731550



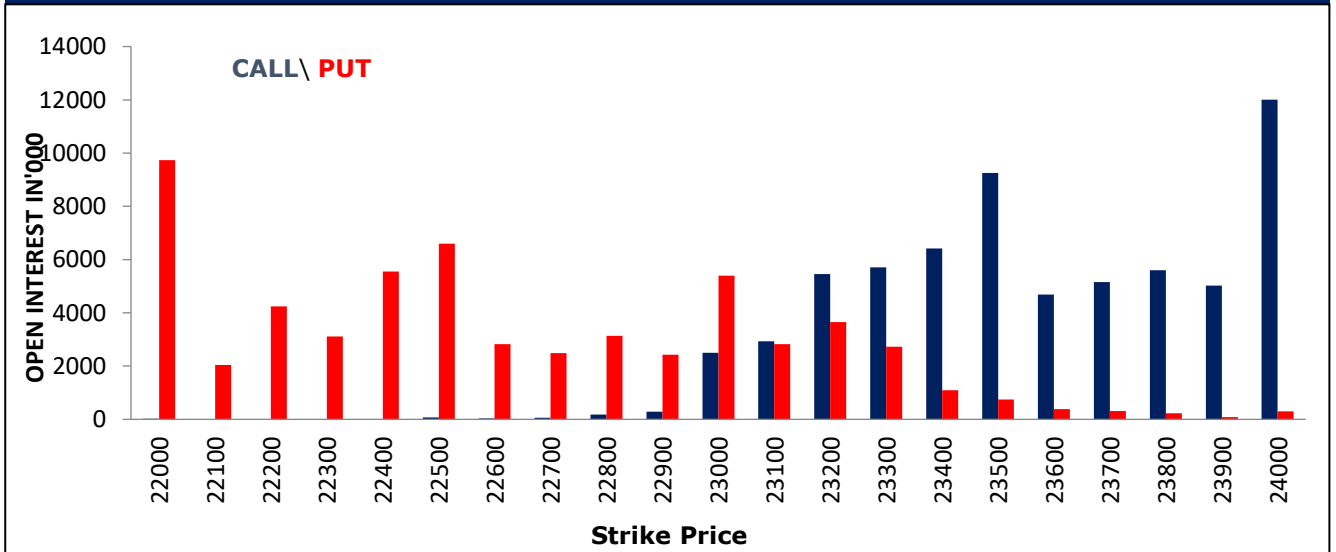
## FII Activity On 21 Jan 2025

	BUY		SELL		NET	OPEN INTEREST	
	Contracts	Value (Rs Cr)	Contracts	Value (Rs Cr)	(Rs Cr)	Contracts	Value (Rs Cr)
<b>Index Futures</b>	<b>58558</b>	<b>3872</b>	<b>75396</b>	<b>6300</b>	<b>-2428</b>	<b>532433</b>	<b>38554</b>
Nifty Futures	42727	2686	51706	4121	-1436	357086	25547
Bank Nifty Fut.	11056	876	19528	1902	-1026	99033	8402
<b>Index Options</b>	<b>10669056</b>	<b>1460297</b>	<b>10697290</b>	<b>1463234</b>	<b>-2937</b>	<b>5770743</b>	<b>534386</b>
Nifty Options	8379914	1293525	8440307	1299281	-5756	3452673	362632
Bank Nifty Opt.	1921072	144461	1865918	140112	4349	1972421	151169
<b>Stock Futures</b>	<b>443381</b>	<b>27668</b>	<b>525352</b>	<b>33126</b>	<b>-5458</b>	<b>5611445</b>	<b>343328</b>
<b>Stock Options</b>	<b>1969516</b>	<b>128147</b>	<b>1995926</b>	<b>129567</b>	<b>-1420</b>	<b>1755409</b>	<b>107629</b>

## FII's Open Interest (Contracts)

Date	Index Futures	Nifty Futures	Bank nifty Futures	Index Options	Nifty Options	Bank Nifty Options	Stock Futures	Stock Options
21-Jan-24	532433	357086	99033	5770743	3452673	1972421	5611445	1755409
20-Jan-24	505965	336499	93147	5182295	2920227	1916896	5572326	1687887
<b>Net Contracts</b>	<b>26468</b>	<b>20587</b>	<b>5886</b>	<b>588448</b>	<b>532446</b>	<b>55525</b>	<b>39119</b>	<b>67522</b>

## Nifty Weekly (23 - Jan) Option Open Interest Distribution





Top Gainers OI Wise		
Company	Future OI (%)	Price (%)
DIXON	66	-14
OBEROIRLTY	45	-7
INDIAMART	24	1
CAMS	23	-4
JIOFIN	21	-6

Top Losers OI Wise		
Company	Future OI (%)	Price (%)
APLAPOLLO	-14	0
NAVINFLUOR	-12	1
ESCORTS	-10	0
INDIANB	-7	-1
LTF	-7	1

Top Gainers Price Wise		
Company	Future OI (%)	Price (%)
HINDPETRO	-2	3
APOLLOHOSP	-4	2
JKCEMENT	-4	2
POONAWALLA	0	1
BERGEPAIN	1	1

Top Losers Price Wise		
Company	Future OI (%)	Price (%)
DIXON	66	-14
ZOMATO	13	-11
MCX	9	-9
KALYANKJIL	-1	-8
OBEROIRLTY	45	-7

Long Buildup		
Company	Future OI (%)	Price (%)
INDIAMART	24	1
AARTIIND	17	1
DALBHARAT	10	1
AUBANK	5	0
TATACONSUM	5	1

Short Buildup		
Company	Future OI (%)	Price (%)
DIXON	66	-14
OBEROIRLTY	45	-7
CAMS	23	-4
JIOFIN	21	-6
KEI	21	-3

Long Unwinding		
Company	Future OI (%)	Price (%)
APLAPOLLO	-14	0
ESCORTS	-10	0
INDIANB	-7	-1
KPITTECH	-7	-2
BAJAJFINSV	-6	-1

Short Covering		
Company	Future OI (%)	Price (%)
NAVINFLUOR	-12	1
LTF	-7	1
MAXHEALTH	-5	1
ULTRACEMCO	-5	0
JKCEMENT	-4	2

## Securities In Ban For Trade – 22.01.2025

No.	Company Name	No.	Company Name
1.	ABFRL	6.	KALYANKJIL
2.	ANGELONE	7.	LTF
3.	BANDHANBNK	8.	MANAPPURAM
4.	CANFINHOME	9.	MGL
5.	DIXON	10.	RBLBANK



## Economic Calendar

Monday	Tuesday	Wednesday	Thursday	Friday
		January 22	January 23	January 24
		<b>UK:</b> Public Sector Net Borrowing (Dec) <b>US:</b> MBA Mortgage Applications (Jan 17), Leading Index (Dec)	<b>Japan:</b> Trade Balance (Dec) <b>US:</b> Initial Jobless Claims (Jan 18), Continuing Claims (Jan 11), Kansas City Fed Mfg. Activity (Jan) <b>EC:</b> Consumer Confidence (Jan P)	<b>Japan:</b> Natl CPI YoY (Dec), <b>BOJ Monetary Policy</b> <b>UK, Japan, India, EC, US:</b> Composite, Mfg., Service PMI (Jan P) <b>US:</b> Uni. of Mich. Sentiment (Jan F), Existing Home Sales (Dec)





## Result Calendar

Monday	Tuesday	Wednesday	Thursday	Friday
		January 22	January 23	January 24
		<ul style="list-style-type: none"> <li>• 20MICRONS</li> <li>• ACCELYA</li> <li>• ADROITINFO</li> <li>• ALLDIGI</li> <li>• BHARAT</li> <li>• BLBLIMITED</li> <li>• BPCL</li> <li>• CIGNITITEC</li> <li>• COFORGE</li> <li>• ELECON</li> <li>• GODIGIT</li> <li>• GRAVITA</li> <li>• HDFCBANK</li> <li>• HERITGFOOD</li> <li>• HINDUNILVR</li> <li>• HUDCO</li> <li>• IIRM</li> <li>• INDOSOLAR</li> <li>• JAGSNPHARM</li> <li>• JAMSHRI</li> <li>• KEYCORP</li> <li>• KISAN</li> <li>• KMGMILK</li> <li>• LXCHEM</li> <li>• MONOT</li> <li>• NIITMTS</li> <li>• NUVOCO</li> <li>• PERSISTENT</li> <li>• PIDILITIND</li> <li>• POLYCAB</li> <li>• QUESTCAP</li> <li>• RGCORP</li> <li>• RSSOFTWARE</li> <li>• RTNPOWER</li> <li>• SHRAAITECH</li> <li>• SPENTEX</li> <li>• STEL</li> <li>• TAKE</li> <li>• TATACOMM</li> <li>• TIPSMUSIC</li> <li>• TLL</li> <li>• TRIVENIGQ</li> <li>• VTL</li> <li>• WENDT</li> <li>• YAMNINV</li> <li>• ZENSARTECH</li> <li>• ZNILKENG</li> </ul>	<ul style="list-style-type: none"> <li>• AARNAV</li> <li>• ACGL</li> <li>• ADANIGREEN</li> <li>• ALIVUS</li> <li>• CAPRICORN</li> <li>• CGCL</li> <li>• CYIENT</li> <li>• DAICHI</li> <li>• DRREDDY</li> <li>• FERVENTSYN</li> <li>• FUTURSEC</li> <li>• GREAVESCOT</li> <li>• HINDPETRO</li> <li>• IEX</li> <li>• INDUSTOWER</li> <li>• IONEXCHANG</li> <li>• JAYNECOIND</li> <li>• JUMBO</li> <li>• KFINTECH</li> <li>• LKPFIN</li> <li>• LKPSEC</li> <li>• MANKIND</li> <li>• MEENST</li> <li>• MENONBE</li> <li>• MPHASIS</li> <li>• MPSLTD</li> <li>• NAM-INDIA</li> <li>• NATHBIOGEN</li> <li>• NDLVENTURE</li> <li>• NPL</li> <li>• PILITA</li> <li>• RAJRATAN</li> <li>• RESTILE</li> <li>• SENORES</li> <li>• SGMART</li> <li>• SHAQUAK</li> <li>• SONACOMS</li> <li>• SURYODAY</li> <li>• SYNGENE</li> <li>• TEJASNET</li> <li>• THYROCARE</li> <li>• TOKYOFIN</li> <li>• TOKYOPLAST</li> <li>• TTML</li> <li>• UJJIVANSFB</li> <li>• ULTRACEMCO</li> <li>• UNITDSPR</li> <li>• UNIVARTS</li> <li>• V2RETAIL</li> <li>• VANDANA</li> <li>• WSFX</li> </ul>	<ul style="list-style-type: none"> <li>• 1STCUS</li> <li>• AAGAMCAP</li> <li>• ACL</li> <li>• ADORWELD</li> <li>• AGRITECH</li> <li>• ALKYLAMINE</li> <li>• ASALCBR</li> <li>• ASHSI</li> <li>• ATUL</li> <li>• AUBANK</li> <li>• AVONMERC</li> <li>• BANKINDIA</li> <li>• BHARATGEAR</li> <li>• BIRLAMONEY</li> <li>• BLAL</li> <li>• CENTRUM</li> <li>• CHEMBOND</li> <li>• CREDITACC</li> <li>• CYBERTECH</li> <li>• DAMCAPITAL</li> <li>• DCBBANK</li> <li>• DLF</li> <li>• DUNCANENG</li> <li>• EMSLIMITED</li> <li>• GARGI</li> <li>• GODREJCP</li> <li>• GOTHIPL</li> <li>• GRANULES</li> <li>• GREENPOWER</li> <li>• GRPLTD</li> <li>• HINDPETRO</li> <li>• IBINFO</li> <li>• INDIGO</li> <li>• INTELECT</li> <li>• JINDALSAW</li> <li>• JSWSTEEL</li> <li>• LAURUSLABS</li> <li>• LMW</li> <li>• MEHAI</li> <li>• MNIL</li> <li>• NIITLTD</li> <li>• NURECA</li> <li>• OMAXAUTO</li> <li>• ORIENTCEM</li> <li>• PHOTOQUP</li> <li>• POCL</li> <li>• RESONANCE</li> <li>• RPGLIFE</li> <li>• SAGCEM</li> <li>• SAMPANN</li> <li>• SASKEN</li> <li>• SHAKTIPUMP</li> <li>• SHARDACROP</li> <li>• SHREDIGCEM</li> <li>• SOLARA</li> <li>• STEELXIND</li> <li>• SUPRIYA</li> <li>• SUVEN</li> <li>• TANFACIND</li> <li>• TORNTPHARM</li> <li>• TOTEM</li> <li>• TRABI</li> <li>• TREEHOUSE</li> <li>• TRIDENT</li> <li>• TTKHLTCARE</li> <li>• UGROCAP</li> </ul>



## OPEN SHORT TERM TRADING CALLS

NO.	RECO DT.	RECO	COMPANY NAME	ENTRY	CMP	SL	TARGET	UPSIDE %	VALID TILL
1	21-JAN-25	BUY	NIFTY JAN FUT	23060-22980	23,105.1	22,960.0	23280	0.8	24-JAN-25
2	21-JAN-25	BUY	CDSL JAN 1600 PUT OPTION	75.55	88.6	50.0	120	35.5	24-JAN-25
3	16-JAN-25	BUY	TATA COMM JAN FUT	1719-1670	1,697.9	1,640.0	1820	7.2	30-JAN-25
4	17-JAN-25	BUY	ONGC JAN FUT	267.30-261	266.3	256.0	281	5.5	31-JAN-25
5	20-JAN-25	BUY	NTPC JAN FUT	330.65-325	324.8	321.4	347	6.8	3-FEB-25
6	14-JAN-25	BUY	JSL	626.65-604	633.1	595.0	663	4.7	28-JAN-25
7	14-JAN-25	BUY	FEDERAL BANK	191.90-187.85	192.4	184.5	205	6.6	28-JAN-25

## OPEN E-MARGIN POSITIONAL CALLS

NO.	RECO DT.	RECO	COMPANY NAME	ENTRY	CMP	SL	TARGET 1	TARGET 2	UPSIDE %	VALID TILL
1	24-DEC-24	BUY	STAR HEALTH	486.75-462	463.3	447.0	535.0	575.0	24	24-MAR-25
2	7-JAN-25	BUY	PFIZER	5255.85-5020	4944.5	4900.0	5645.0	5940.0	20	7-MAR-25
3	15-JAN-25	BUY	MOIL	357.75-343	341.1	332.0	388.0	415.0	22	15-MAR-25
4	20-JAN-25	BUY	OIL INDIA	484.35-463	474.3	453.0	520.0	543.0	14	20-FEB-25
5	21-JAN-25	BUY	TATA CONSUMER	967.6-932	972.1	907.0	1035.0	1090.0	12	21-FEB-25

## MUHURAT TRADING MTF PICKS

NO.	RECO DT.	RECO	COMPANY NAME	ENTRY	CMP	SL	TARGET 1	TARGET 2	UPSIDE %	VALID TILL
1	28-OCT-24	BUY	KARUR VYSYA BANK	214-218	227.8	183.0	249.0	269.0	18	NEXT DIWALI

\*= 1st Target Achieved



## NSE 200 SUPPORT & RESISTANCE

SYMBOL	CLOSE	R2	R1	PIVOT	S1	S2	5 DMA	20 DMA	% Delivery	Trend
ABB	6281.2	6641.1	6461.1	6362.3	6182.3	6083.5	6367.2	6593.9	53.7	Bearish
ABCAPITAL	174.4	181.1	177.7	175.8	172.4	170.5	176.3	178.0	47.0	Bearish
ABFRL	277.2	288.5	282.8	279.5	273.8	270.5	275.3	275.6	39.6	Bearish
ACC	2017.5	2083.0	2050.3	2029.9	1997.2	1976.8	1999.1	2012.1	28.5	Bearish
AMBUJACEM	531.8	555.1	543.4	537.0	525.3	518.9	532.6	533.4	29.5	Bearish
ADANIPOWER	528.8	558.4	543.6	534.9	520.1	511.4	547.3	518.2	17.7	Bullish
ADANIGREEN	1045.7	1083.4	1064.6	1051.2	1032.3	1018.9	1059.2	1024.4	23.9	Bullish
ADANITRANS	813.4	837.9	825.6	814.4	802.2	791.0	801.4	785.3	27.2	Bullish
ADANIENT	2384.3	2468.0	2426.2	2399.9	2358.1	2331.8	2408.6	2451.6	36.8	Bearish
ADANIPORTS	1106.2	1171.7	1139.0	1121.5	1088.7	1071.2	1139.6	1168.3	37.3	Bearish
ASHOKLEY	204.8	213.4	209.1	206.6	202.3	199.9	207.0	217.2	46.3	Bearish
ALKEM	5177.3	5355.8	5266.5	5209.8	5120.5	5063.8	5210.9	5409.1	46.7	Bearish
APOLLOHOSP	6919.2	7101.0	7010.1	6924.0	6833.1	6747.1	6801.9	7107.0	33.2	Bearish
ASIANPAINT	2260.4	2336.8	2298.6	2276.8	2238.6	2216.8	2249.4	2283.8	42.4	Bearish
APOLLOTYRE	447.6	462.6	455.1	450.7	443.2	438.9	452.4	491.4	34.6	Bearish
AUROPHARMA	1187.0	1232.2	1209.6	1197.3	1174.7	1162.4	1174.3	1249.5	37.3	Bearish
ASTRAL	1464.6	1519.1	1491.9	1471.5	1444.2	1423.8	1485.6	1572.5	54.6	Bearish
ATGL	666.3	684.4	675.4	669.9	660.9	655.4	670.2	693.5	25.6	Bearish
AUBANK	606.7	618.8	612.8	604.9	598.9	591.0	600.1	574.1	40.6	Bullish
AWL	268.1	273.9	271.0	267.7	264.8	261.5	268.7	303.0	54.3	Bearish
AXISBANK	970.2	1007.3	988.8	975.9	957.3	944.4	1002.8	1051.7	54.3	Bearish
BAJFINANCE	7291.7	7558.8	7425.2	7351.4	7217.8	7144.0	7270.2	7171.8	41.0	Bullish
BANDHANBNK	150.3	154.9	152.6	151.2	148.9	147.5	150.7	153.8	33.8	Bearish
BATAINDIA	1288.9	1323.8	1306.3	1295.7	1278.2	1267.6	1303.8	1373.5	34.8	Bearish
BHARTIARTL	1626.2	1670.8	1648.5	1634.4	1612.1	1598.0	1626.5	1604.7	57.7	Bullish
BEL	279.0	290.0	284.5	281.4	275.9	272.7	278.2	283.2	41.1	Bearish
BHEL	209.6	221.6	215.6	212.2	206.2	202.8	210.7	219.9	26.6	Bearish
BHARATFORG	1201.7	1246.7	1224.2	1211.9	1189.4	1177.1	1203.0	1253.0	58.5	Bearish
BALKRISIND	2681.6	2881.3	2781.5	2724.1	2624.3	2566.9	2702.9	2770.3	21.5	Bearish
BIOCON	390.6	410.3	400.4	394.8	385.0	379.4	392.2	372.3	30.1	Bullish
BAJAJ-AUTO	8468.6	8693.2	8580.9	8496.5	8384.2	8299.8	8550.9	8739.4	57.4	Bearish
BAJAJFINSV	1717.0	1766.3	1741.7	1726.3	1701.7	1686.3	1700.4	1658.6	27.0	Bullish
BAJAJHLDNG	10797.0	11185.4	10991.2	10828.4	10634.2	10471.4	10849.5	11200.8	47.5	Bearish
BANKBARODA	229.6	235.5	232.5	230.5	227.5	225.5	228.1	233.7	34.6	Bearish
BANKINDIA	100.1	103.1	101.6	100.7	99.2	98.4	99.6	99.9	28.1	Bearish
ABBOTINDIA	27631.4	28335.2	27983.3	27788.2	27436.3	27241.3	27657.4	28925.5	42.7	Bearish
BOSCHLTD	30611.0	31917.1	31264.1	30896.9	30243.9	29876.7	31193.2	32792.7	31.9	Bearish
BPCL	280.2	290.6	285.4	281.8	276.6	272.9	273.0	283.4	20.6	Bearish
BERGEPAIN	475.2	484.8	480.0	474.1	469.3	463.4	468.3	457.2	54.5	Bullish
BRITANNIA	4903.9	4993.4	4948.6	4899.4	4854.6	4805.3	4873.0	4837.9	62.5	Bullish
CANBK	99.5	102.7	101.1	100.1	98.5	97.5	98.1	97.9	30.3	Bullish
CONCOR	755.9	787.8	771.9	761.9	746.0	736.0	767.6	768.5	46.2	Bearish
CGPOWER	658.1	694.1	676.1	665.0	646.9	635.8	645.7	691.7	52.3	Bearish
CHOLAFIN	1240.5	1280.6	1260.6	1249.4	1229.4	1218.2	1256.2	1245.3	57.0	Bearish
CIPLA	1428.0	1479.1	1453.5	1439.3	1413.7	1399.5	1441.3	1481.8	38.4	Bearish
COLPAL	2731.9	2786.8	2759.3	2734.0	2706.5	2681.1	2688.3	2741.9	48.8	Bearish
COALINDIA	381.6	392.7	387.1	384.1	378.5	375.4	381.9	380.4	78.0	Bullish
COFORGE	8261.1	8902.5	8581.8	8412.0	8091.3	7921.4	8575.9	9224.4	53.7	Bearish
COROMANDEL	1844.3	1895.3	1869.8	1853.9	1828.4	1812.6	1855.5	1887.9	55.6	Bearish
CROMPTON	353.2	367.3	360.2	355.9	348.8	344.5	360.7	372.1	44.5	Bearish



## NSE 200 SUPPORT & RESISTANCE

SYMBOL	CLOSE	R2	R1	PIVOT	S1	S2	5 DMA	20 DMA	% Delivery	Trend
DABUR	521.3	532.6	526.9	523.2	517.5	513.8	521.4	514.0	52.4	Bullish
DALBHARAT	1771.2	1813.1	1792.1	1775.1	1754.1	1737.1	1744.6	1758.5	74.0	Bearish
DELHIVERY	329.3	349.9	339.6	333.6	323.3	317.3	334.0	339.3	50.4	Bearish
DEVYANI	179.5	187.8	183.7	181.3	177.2	174.9	185.2	185.9	33.7	Bearish
DIVISLAB	5818.9	6159.5	5989.2	5897.8	5727.5	5636.0	5905.7	5923.8	53.0	Bearish
DIXON	15144.4	18164.1	16654.2	15841.1	14331.2	13518.1	16757.4	17376.5	31.2	Bearish
DLF	737.9	774.0	756.0	746.3	728.2	718.5	744.6	787.9	35.2	Bearish
LALPATHLAB	2794.3	2882.5	2838.4	2806.6	2762.5	2730.6	2802.0	2924.3	45.0	Bearish
DMART	3587.8	3671.0	3629.4	3588.4	3546.8	3505.7	3598.5	3648.6	32.2	Bearish
DEEPAKNTN	2349.2	2427.0	2388.1	2366.1	2327.2	2305.1	2359.0	2444.3	28.4	Bearish
DRREDDY	1288.2	1322.9	1305.5	1295.6	1278.2	1268.3	1308.0	1348.4	49.3	Bearish
EICHERMOT	4970.0	5123.3	5046.6	5003.3	4926.6	4883.3	5025.7	5027.0	57.4	Bearish
ESCORTS	3573.7	3651.9	3612.8	3572.4	3533.2	3492.8	3556.6	3375.9	37.9	Bullish
FEDERALBNK	192.4	196.6	194.5	192.9	190.7	189.1	193.5	196.2	47.1	Bearish
FLUOROCHEM	3823.6	3987.9	3905.7	3803.7	3721.6	3619.6	3786.3	3988.3	38.1	Bearish
FORTIS	640.0	668.3	654.2	645.7	631.6	623.1	650.5	689.9	62.0	Bearish
GAIL	179.9	185.2	182.6	180.9	178.3	176.6	180.3	185.7	42.6	Bearish
GODREJCP	1159.0	1188.5	1173.7	1164.6	1149.8	1140.7	1158.3	1127.4	73.2	Bullish
GLAND	1659.2	1715.2	1687.2	1669.1	1641.1	1623.0	1673.1	1773.2	58.2	Bearish
GODREJPROP	2365.9	2477.9	2421.9	2390.4	2334.4	2303.0	2374.4	2581.5	54.8	Bearish
GRASIM	2367.5	2450.1	2408.8	2385.2	2343.9	2320.4	2362.7	2419.8	42.7	Bearish
GUJGASLTD	499.3	509.6	504.4	499.2	494.0	488.8	495.9	499.0	52.8	Bearish
HAVELLS	1576.6	1631.5	1604.0	1587.5	1560.0	1543.5	1567.4	1622.9	72.0	Bearish
HCLTECH	1802.4	1834.2	1818.3	1804.9	1789.0	1775.5	1798.7	1889.9	58.0	Bearish
HDFCAMC	4029.7	4116.1	4072.9	4042.3	3999.1	3968.6	4047.8	4092.8	65.9	Bearish
HDFCBANK	1642.4	1673.5	1658.0	1645.5	1630.0	1617.5	1645.1	1710.5	44.6	Bearish
HDFCLIFE	624.0	642.1	633.1	628.0	618.9	613.8	627.2	618.3	59.6	Bullish
HEROMOTOCO	4024.8	4160.3	4092.5	4051.3	3983.5	3942.3	4080.2	4158.6	46.5	Bearish
HAL	4050.8	4303.4	4177.1	4107.1	3980.8	3910.8	4019.3	4086.8	30.6	Bearish
HINDALCO	615.0	633.8	624.4	618.9	609.5	604.0	608.9	598.4	34.6	Bullish
HINDPETRO	370.0	381.2	375.6	366.8	361.2	352.4	362.1	389.2	43.8	Bearish
HINDUNILVR	2340.5	2394.9	2367.7	2350.1	2322.9	2305.2	2351.5	2370.0	49.1	Bearish
HONAUT	40330.2	41178.0	40754.1	40477.1	40053.2	39776.2	40614.9	41463.2	42.2	Bearish
HINDZINC	461.0	478.2	469.6	463.9	455.3	449.7	456.2	448.0	43.7	Bullish
ICICIBANK	1196.2	1255.5	1225.8	1209.3	1179.6	1163.0	1228.4	1262.5	59.5	Bearish
ICICIGI	1902.5	1975.4	1939.0	1916.4	1880.0	1857.4	1915.3	1860.2	63.4	Bullish
IDEA	9.4	10.2	9.8	9.6	9.1	8.9	9.2	8.2	26.0	Bullish
IDFCFIRSTB	63.3	65.2	64.2	63.4	62.5	61.7	62.9	62.7	36.8	Bullish
IGL	395.8	413.0	404.4	399.4	390.8	385.8	400.6	409.7	30.0	Bearish
INDHOTEL	760.4	812.3	786.3	772.7	746.8	733.2	797.9	833.6	50.6	Bearish
INDUSINDBK	960.5	986.2	973.3	965.7	952.8	945.2	968.0	965.0	34.7	Bearish
INDIANB	525.3	538.6	532.0	527.1	520.5	515.6	522.4	518.7	50.1	Bullish
INDIGO	4009.8	4199.8	4104.8	4044.9	3949.9	3890.0	4078.4	4325.3	74.5	Bearish
INDUSTOWER	361.7	378.8	370.2	365.4	356.9	352.1	361.3	340.9	42.4	Bullish
INFY	1800.7	1847.1	1823.9	1808.5	1785.3	1769.9	1861.5	1909.7	47.2	Bearish
NAUKRI	7457.5	7786.5	7622.0	7523.5	7359.0	7260.5	7611.9	8202.5	53.0	Bearish
IOC	131.1	134.8	132.9	131.8	129.9	128.8	128.7	132.7	35.7	Bearish
IPCALAB	1545.8	1599.4	1572.6	1555.2	1528.4	1511.0	1550.4	1635.1	40.6	Bearish
ICICIPRULI	635.6	659.0	647.3	640.3	628.6	621.6	641.4	651.9	38.8	Bearish
IRCTC	782.7	803.4	793.1	787.2	776.8	770.9	775.2	776.2	31.0	Bearish



## NSE 200 SUPPORT & RESISTANCE

SYMBOL	CLOSE	R2	R1	PIVOT	S1	S2	5 DMA	20 DMA	% Delivery	Trend
IRFC	142.4	148.7	145.5	143.5	140.3	138.2	143.2	144.5	22.2	Bearish
ITC	437.6	451.7	444.6	439.9	432.9	428.2	437.1	446.6	36.7	Bearish
JINDALSTEL	918.9	949.3	934.1	924.8	909.6	900.3	921.1	927.9	37.9	Bearish
JSWSTEEL	926.9	939.9	933.4	926.5	919.9	913.0	913.1	907.2	27.0	Bullish
JSWENERGY	557.6	590.7	574.1	565.4	548.8	540.1	567.4	594.6	59.2	Bearish
JUBLFOOD	673.4	780.3	726.9	694.5	641.1	608.7	690.1	721.6	41.9	Bearish
CUMMINSIND	2903.8	2998.6	2951.2	2925.6	2878.2	2852.6	2919.1	3113.1	55.2	Bearish
KOTAKBANK	1893.3	1931.7	1912.5	1901.8	1882.6	1871.8	1833.5	1788.8	44.2	Bullish
LAURUSLABS	576.9	599.8	588.3	581.8	570.3	563.8	568.7	587.3	27.0	Bearish
LICHSGFIN	560.4	579.8	570.1	564.2	554.5	548.5	562.3	578.1	34.2	Bearish
LICI	837.6	873.9	855.7	845.6	827.4	817.3	846.4	867.2	33.2	Bearish
LUPIN	2104.3	2176.7	2140.5	2119.2	2083.0	2061.8	2115.1	2233.8	37.0	Bearish
LT	3541.1	3686.0	3613.6	3570.8	3498.4	3455.6	3542.4	3582.5	46.4	Bearish
LTF	146.1	152.1	149.1	144.5	141.5	137.0	143.2	139.7	34.8	Bullish
LTIM	5758.4	5934.7	5846.6	5793.8	5705.6	5652.8	5858.1	5797.7	39.4	Bearish
LTTS	5380.4	5498.4	5439.4	5399.4	5340.4	5300.4	5244.8	4900.8	25.7	Bullish
MANKIND	2563.6	2737.9	2650.7	2601.4	2514.2	2464.9	2602.0	2784.0	43.9	Bearish
MFSL	1053.1	1093.3	1073.2	1059.4	1039.3	1025.4	1063.0	1089.2	74.6	Bearish
MAXHEALTH	1078.2	1102.3	1090.3	1076.0	1063.9	1049.6	1051.8	1126.4	62.1	Bearish
M&M	2821.3	2943.8	2882.6	2845.7	2784.5	2747.6	2913.5	3029.2	44.3	Bearish
M&MFIN	265.3	274.4	269.8	267.2	262.6	260.0	267.8	269.7	41.3	Bearish
MOTHERSON	145.9	153.6	149.8	147.6	143.7	141.5	149.2	152.0	42.1	Bearish
MPHASIS	2773.6	2883.9	2828.7	2799.0	2743.9	2714.2	2799.4	2860.9	51.3	Bearish
MARICO	666.4	675.1	670.8	664.0	659.6	652.8	660.1	652.0	63.2	Bullish
MRF	112097.3	116484.2	114290.7	113101.4	110907.9	109718.6	113704.6	121775.9	34.0	Bearish
MARUTI	11883.7	12239.6	12061.7	11961.9	11783.9	11684.1	12016.0	11560.2	32.1	Bullish
MSUMI	56.1	58.0	57.1	56.4	55.5	54.8	56.3	57.4	42.0	Bearish
MUTHOOT FIN	2165.1	2212.4	2188.7	2159.4	2135.7	2106.4	2163.3	2149.8	41.2	Bullish
NESTLEIND	2196.5	2257.8	2227.1	2209.3	2178.7	2160.9	2199.3	2199.4	41.9	Bearish
NAVINFLUOR	3797.0	3896.1	3846.6	3801.5	3751.9	3706.8	3762.3	3512.8	54.1	Bullish
NHPC	79.0	80.8	79.9	79.4	78.5	77.9	79.1	79.4	41.5	Bearish
NMDC	66.3	69.0	67.6	66.8	65.5	64.6	65.8	66.1	44.7	Bearish
NTPC	324.3	343.2	333.8	328.8	319.3	314.3	326.7	326.7	42.2	Bearish
NYKAA	168.2	174.8	171.5	168.8	165.5	162.9	172.2	167.5	52.1	Bullish
OBEROIRLTY	1858.1	2104.6	1981.3	1896.7	1773.4	1688.8	1964.3	2163.2	23.6	Bearish
OFSS	9765.9	10456.4	10111.2	9919.7	9574.5	9383.0	10110.2	11610.4	31.3	Bearish
OIL	474.3	496.4	485.3	478.8	467.8	461.3	473.5	457.2	25.8	Bullish
ONGC	265.8	271.2	268.5	266.7	264.0	262.1	264.6	254.2	38.7	Bullish
PAGEIND	45975.9	47325.9	46650.9	46258.6	45583.6	45191.3	46078.4	47160.9	54.5	Bearish
PATANJALI	1833.8	1904.7	1869.2	1838.0	1802.5	1771.3	1841.8	1816.9	40.1	Bullish
PAYTM	854.3	949.7	902.0	863.7	816.0	777.7	881.4	930.1	17.6	Bearish
PRESTIGE	1388.9	1517.6	1453.2	1417.6	1353.3	1317.7	1442.8	1571.2	60.3	Bearish
PGHH	14840.3	14991.6	14915.9	14828.3	14752.6	14665.0	14747.7	14708.9	52.6	Bullish
PIIND	3519.9	3664.0	3591.9	3548.0	3475.9	3432.0	3521.6	3617.5	58.8	Bearish
PIDILITIND	2749.7	2843.2	2796.4	2768.2	2721.5	2693.3	2787.7	2874.4	57.9	Bearish
PEL	1009.9	1044.0	1026.9	1014.6	997.5	985.1	1022.0	1053.9	24.1	Bearish
PETRONET	325.4	336.9	331.2	326.1	320.3	315.2	325.3	331.3	37.3	Bearish
PNB	100.3	102.9	101.6	100.6	99.3	98.2	100.0	101.3	24.8	Bearish
POLICYBZR	1651.5	1793.5	1722.5	1681.9	1610.9	1570.3	1740.5	1951.6	50.8	Bearish
POLYCAB	6559.7	6931.1	6745.4	6635.9	6450.1	6340.6	6652.6	6908.8	31.2	Bearish



## NSE 200 SUPPORT & RESISTANCE

SYMBOL	CLOSE	R2	R1	PIVOT	S1	S2	5 DMA	20 DMA	% Delivery	Trend
POONAWALLA	323.9	337.2	330.5	324.3	317.6	311.4	315.7	315.6	16.6	Bullish
PFC	427.9	444.8	436.4	431.0	422.5	417.1	432.2	437.5	41.5	Bearish
PERSISTENT	5896.7	6236.1	6066.4	5974.1	5804.4	5712.0	6026.3	6247.5	46.1	Bearish
POWERGRID	302.4	313.1	307.7	304.6	299.3	296.2	301.5	304.8	46.4	Bearish
RECLTD	476.5	497.4	486.9	480.6	470.1	463.8	482.7	495.6	36.5	Bearish
RELIANCE	1273.7	1328.4	1301.1	1285.6	1258.3	1242.8	1280.0	1245.0	44.9	Bullish
SAIL	109.9	113.3	111.6	109.9	108.2	106.5	108.3	110.6	33.2	Bearish
SBICARD	762.6	782.7	772.7	759.3	749.3	735.9	750.6	717.1	53.2	Bullish
SBILIFE	1466.6	1523.5	1495.0	1477.5	1449.1	1431.6	1498.6	1452.4	46.9	Bullish
SBIN	759.1	795.5	777.3	766.7	748.4	737.8	764.5	776.3	39.6	Bearish
SHRIRAMFIN	520.3	538.8	529.6	521.5	512.3	504.2	528.7	563.8	51.1	Bearish
SIEMENS	5923.6	6246.1	6084.9	5998.8	5837.5	5751.4	6012.4	6307.3	43.5	Bearish
SONACOMS	556.4	581.0	568.7	561.6	549.3	542.2	570.2	581.0	67.8	Bearish
SHREECEM	25086.8	25755.5	25421.1	25215.6	24881.2	24675.7	25252.1	25739.0	44.1	Bearish
SRF	2575.2	2653.5	2614.3	2592.9	2553.7	2532.3	2573.8	2406.3	46.8	Bullish
SUNPHARMA	1762.7	1822.2	1792.5	1776.0	1746.2	1729.7	1769.5	1821.2	46.2	Bearish
SUNTV	644.4	665.3	654.8	648.5	638.1	631.8	649.3	669.7	16.1	Bearish
SYNGENE	832.2	849.6	840.9	833.0	824.2	816.3	822.1	849.0	38.3	Bearish
TATASTEEL	129.7	133.6	131.7	130.5	128.5	127.3	129.2	133.0	35.0	Bearish
TATACONSUM	972.1	989.4	980.8	969.3	960.7	949.2	956.0	941.9	41.5	Bullish
TATACOMM	1697.1	1773.0	1735.0	1710.0	1672.0	1647.0	1701.5	1705.1	32.3	Bearish
TCS	4035.9	4140.0	4087.9	4059.0	4006.9	3978.0	4112.2	4090.0	39.2	Bearish
TECHM	1640.5	1727.5	1684.0	1660.1	1616.6	1592.6	1667.8	1684.9	42.6	Bearish
TATAELXSI	6154.0	6324.7	6239.3	6189.7	6104.3	6054.7	6173.2	6464.7	32.9	Bearish
TIINDIA	3380.3	3541.3	3460.8	3404.5	3324.0	3267.7	3369.5	3484.6	48.7	Bearish
TORNTPOWER	1438.0	1505.3	1471.6	1451.3	1417.7	1397.4	1462.4	1449.8	43.5	Bearish
TATAPOWER	365.9	380.0	372.9	369.1	362.0	358.2	369.7	378.5	25.5	Bearish
RAMCOCEM	871.1	904.5	887.8	878.3	861.6	852.1	881.2	933.4	50.0	Bearish
TRENT	5737.0	6242.1	5989.5	5856.4	5603.8	5470.7	6129.1	6688.6	47.0	Bearish
TRIDENT	32.0	33.0	32.5	32.2	31.7	31.3	32.0	32.5	31.1	Bearish
TORNTPHARM	3156.3	3227.8	3192.1	3167.5	3131.7	3107.1	3177.8	3314.2	60.0	Bearish
TITAN	3353.4	3444.6	3399.0	3367.1	3321.4	3289.5	3346.7	3370.8	28.2	Bearish
TATACHEM	960.1	994.6	977.3	966.7	949.4	938.8	968.2	1005.5	38.2	Bearish
TTML	78.1	82.5	80.3	78.5	76.3	74.5	74.6	74.5	15.1	Bullish
TATAMOTORS	760.8	796.9	778.8	768.6	750.6	740.4	770.6	765.0	26.5	Bearish
TVSMOTOR	2291.9	2344.5	2318.2	2300.2	2273.9	2255.9	2282.9	2349.8	67.9	Bearish
UBL	2064.5	2143.1	2103.8	2079.6	2040.3	2016.1	1990.6	2029.8	34.7	Bearish
UNIONBANK	109.5	113.9	111.7	110.4	108.2	106.9	109.2	113.2	38.3	Bearish
UNITDSPR	1438.0	1488.8	1463.4	1448.4	1423.0	1408.1	1429.7	1549.1	56.9	Bearish
UPL	544.3	565.6	554.9	549.2	538.5	532.8	548.4	528.2	24.0	Bullish
ULTRACEMCO	10667.8	11085.3	10876.6	10759.3	10550.6	10433.3	10606.0	11139.1	38.7	Bearish
VBL	541.5	571.7	556.6	547.9	532.8	524.2	557.2	604.7	52.0	Bearish
VEDL	453.9	473.0	463.5	458.2	448.7	443.4	450.8	445.8	37.9	Bullish
VOLTAS	1504.4	1579.7	1542.0	1521.2	1483.6	1462.8	1572.1	1697.1	36.1	Bearish
WHIRLPOOL	1604.0	1692.9	1648.4	1618.7	1574.3	1544.6	1661.1	1752.5	42.8	Bearish
WIPRO	298.4	308.7	303.5	300.7	295.5	292.6	292.3	297.4	38.9	Bearish
YESBANK	18.5	19.3	18.9	18.7	18.3	18.0	18.4	18.9	27.5	Bearish
ZEEL	120.6	125.6	123.1	121.6	119.1	117.6	121.6	124.4	35.7	Bearish
ZOMATO	214.6	235.7	225.1	216.5	205.9	197.3	237.8	255.9	39.7	Bearish
ZYDUSLIFE	985.9	1014.4	1000.2	991.7	977.5	969.0	989.8	982.3	41.6	Bullish





## Disclaimer:

This report has been prepared by HDFC Securities Ltd and is solely for information of the recipient only. The report must not be used as a singular basis of any investment decision. The views herein are of a general nature and do not consider the risk appetite or the particular circumstances of an individual investor; readers are requested to take professional advice before investing. Nothing in this document should be construed as investment advice. Each recipient of this document should make such investigations as they deem necessary to arrive at an independent evaluation of an investment in securities of the companies referred to in this document (including merits and risks) and should consult their own advisors to determine merits and risks of such investment. The information and opinions contained herein have been compiled or arrived at, based upon information obtained in good faith from sources believed to be reliable. Such information has not been independently verified and no guaranty, representation of warranty, express or implied, is made as to its accuracy, completeness or correctness. All such information and opinions are subject to change without notice. Descriptions of any company or companies or their securities mentioned herein are not intended to be complete. HSL is not obliged to update this report for such changes. HSL has the right to make changes and modifications at any time.

This report is not directed to, or intended for display, downloading, printing, reproducing or for distribution to or use by, any person or entity who is a citizen or resident or located in any locality, state, country or other jurisdiction where such distribution, publication, reproduction, availability or use would be contrary to law or regulation or what would subject HSL or its affiliates to any registration or licensing requirement within such jurisdiction.

If this report is inadvertently sent or has reached any person in such country, especially, United States of America, the same should be ignored and brought to the attention of the sender. This document may not be reproduced, distributed or published in whole or in part, directly or indirectly, for any purposes or in any manner.

Foreign currencies denominated securities, wherever mentioned, are subject to exchange rate fluctuations, which could have an adverse effect on their value or price, or the income derived from them. In addition, investors in securities such as ADRs, the values of which are influenced by foreign currencies effectively assume currency risk. It should not be considered to be taken as an offer to sell or a solicitation to buy any security.

This document is not, and should not, be construed as an offer or solicitation of an offer, to buy or sell any securities or other financial instruments. This report should not be construed as an invitation or solicitation to do business with HSL. HSL may from time to time solicit from, or perform broking, or other services for, any company mentioned in this mail and/or its attachments.

HSL and its affiliated company(ies), their directors and employees may; (a) from time to time, have a long or short position in, and buy or sell the securities of the company(ies) mentioned herein or (b) be engaged in any other transaction involving such securities and earn brokerage or other compensation or act as a market maker in the financial instruments of the company(ies) discussed herein or act as an advisor or lender/borrower to such company(ies) or may have any other potential conflict of interests with respect to any recommendation and other related information and opinions.

HSL, its directors, analysts or employees do not take any responsibility, financial or otherwise, of the losses or the damages sustained due to the investments made or any action taken on basis of this report, including but not restricted to, fluctuation in the prices of shares and bonds, changes in the currency rates, diminution in the NAVs, reduction in the dividend or income, etc.

HSL and other group companies, its directors, associates, employees may have various positions in any of the stocks, securities and financial instruments dealt in the report, or may make sell or purchase or other deals in these securities from time to time or may deal in other securities of the companies / organizations described in this report. As regards the associates of HSL please refer the website.

HSL or its associates might have managed or co-managed public offering of securities for the subject company or might have been mandated by the subject company for any other assignment in the past twelve months.

HSL or its associates might have received any compensation from the companies mentioned in the report during the period preceding twelve months from the date of this report for services in respect of managing or co-managing public offerings, corporate finance, investment banking or merchant banking, brokerage services or other advisory service in a merger or specific transaction in the normal course of business.





HSL or its analysts did not receive any compensation or other benefits from the companies mentioned in the report or third party in connection with preparation of the research report. Accordingly, neither HSL nor Research Analysts have any material conflict of interest at the time of publication of this report. Compensation of our Research Analysts is not based on any specific merchant banking, investment banking or brokerage service transactions. HSL may have issued other reports that are inconsistent with and reach different conclusion from the information presented in this report. Research entity has not been engaged in market making activity for the subject company. Research analyst has not served as an officer, director or employee of the subject company. We have not received any compensation/benefits from the subject company or third party in connection with the Research Report.

Please note that HDFC Securities has a proprietary trading desk. This desk maintains an arm's length distance with the Research team and all its activities are segregated from Research activities. The proprietary desk operates independently, potentially leading to investment decisions that may deviate from research views.

HDFC securities Limited, I Think Techno Campus, Building - B, "Alpha", Office Floor 8, Near Kanjurmarg Station, Opp. Crompton Greaves, Kanjurmarg (East), Mumbai 400 042 Phone: (022) 3075 3400 Fax: (022) 2496 5066

Compliance Officer: Murli V Karkera Email: [complianceofficer@hdfcsec.com](mailto:complianceofficer@hdfcsec.com) Phone: (022) 3045 3600

For grievance redressal contact Customer Care Team Email: [customercare@hdfcsec.com](mailto:customercare@hdfcsec.com) Phone: (022) 3901 9400

HDFC Securities Limited, SEBI Reg. No.: NSE, BSE, MSEI, MCX: INZ000186937; AMFI Reg. No. ARN: 13549; PFRDA Reg. No. POP: 11092018; IRDA Corporate Agent License No.: CA0062; SEBI Research Analyst Reg. No.: INH000002475; SEBI Investment Adviser Reg. No.: INA000011538; CIN - U67120MH2000PLC152193

Investment in securities market are subject to market risks. Read all the related documents carefully before investing.

Mutual Funds Investments are subject to market risk. Please read the offer and scheme related documents carefully before investing.

Registration granted by SEBI, membership of BASL (in case of IAs) and certification from NISM in no way guarantee performance of the intermediary or provide any assurance of returns to investors.

# #HDFCsecMythBusters



**Scan the code to  
download our mobile app now!**

Global Investing, Basket Investing are not a Exchange traded product and all disputes related to the distribution activity of Global Investing and Basket Investing will not have access to Exchange investor redressal forum or Arbitration mechanism. Involvement of HDFC securities is restricted to Referral only. HDFC securities does not offer this product directly to customers <https://www.hdfcsec.com/globalinvesting>. Account would be opened after all procedure relating to IPV and client due diligence is completed. Investment in securities market are subject to market risks, read all the related documents carefully before investing. SEBI registration & disclaimers: <https://www.hdfcsec.com/article/disclaimer-1795>.  
The information is only for consumption by the client and such material should not be redistributed.